

Procedure	Receiving ,sending email from new mail server and checking mail at New WebMail interface		
Reference No		Launched Date	January 14, 2015
Apply To	Corporate Mail		

3.4 Click **Next**

3.5 Setup information on your server type details

Server Type : **POP3**

Incoming mail server : **mail.expressdata.co.th**

Outgoing mail server : **mail.expressdata.co.th**

3.6 Click **More Settings**



Add New E-mail Account

Internet E-mail Settings
Each of these settings are required to get your e-mail account working.

User Information
Your Name: Your E-mail
E-mail Address: it@expressdata.co.th

Server Information
Account Type: POP3
Incoming mail server: mail.expressdata.co.th
Outgoing mail server (SMTP): mail.expressdata.co.th

Logon Information
User Name: it@expressdata.co.th
Password: *****
 Remember password
 Require logon using Secure Password Authentication (SPA)

Test Account Settings
After filling out the information on this screen, we recommend you test your account by clicking the button below. (Requires network connection)
Test Account Settings ...

More Settings ...

< Back Next > Cancel

Procedure	Receiving ,sending email from new mail server and checking mail at New WebMail interface		
Reference No		Launched Date	January 14, 2015
Apply To	Corporate Mail		

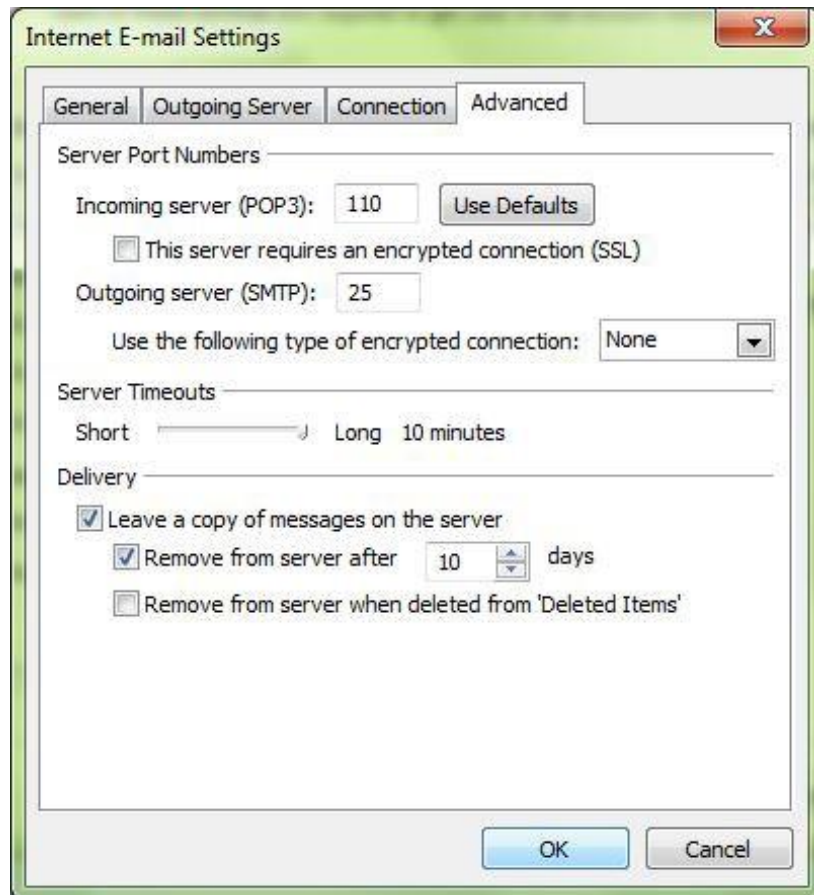
3.6 Setup page **Outgoing server**



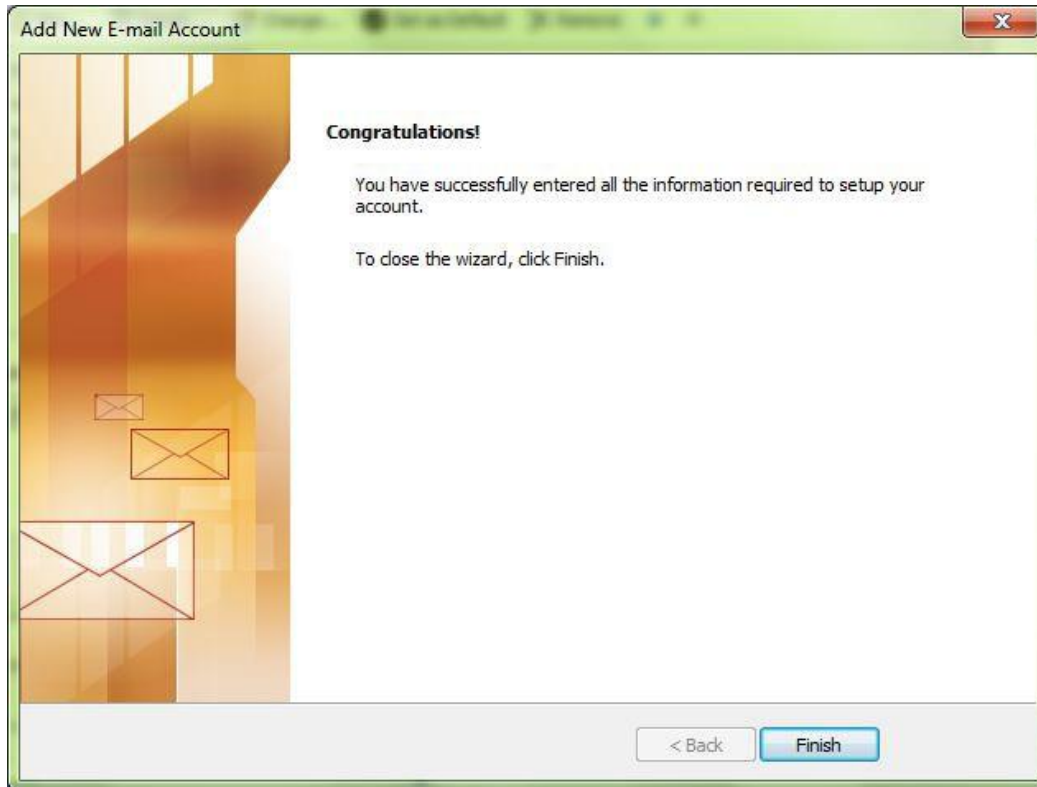
3.7 Setup page **Advanced**

3.8 Click **OK**

Procedure	Receiving ,sending email from new mail server and checking mail at New WebMail interface		
Reference No		Launched Date	January 14, 2015
Apply To	Corporate Mail		

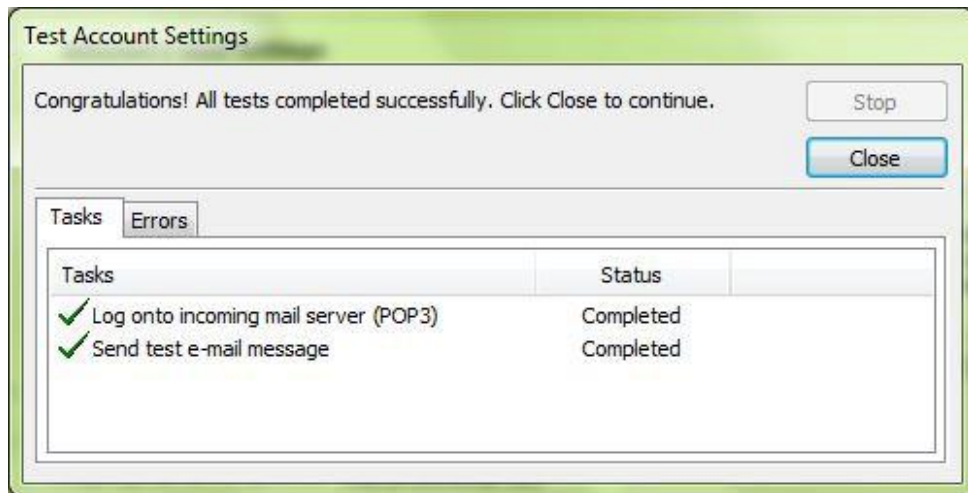


Procedure	Receiving ,sending email from new mail server and checking mail at New WebMail interface		
Reference No		Launched Date	January 14, 2015
Apply To	Corporate Mail		



3.9 After filling out the information we recommend you test your account by clicking the button, **Test Account Setting**. If all tests completed successfully you will see all green tick as below.

Procedure	Receiving ,sending email from new mail server and checking mail at New WebMail interface		
Reference No		Launched Date	January 14, 2015
Apply To	Corporate Mail		



3.10 Click **Next** and **Finish**.

